



# EV6-210 (6V210Ah)

EV (Electric Vehicle) series is specially designed for frequent deep cycle discharge. By using the specially designed active material and strong grids, the EV series battery offers reliable performance in high load situations and can deliver more than 300 cycles at 100% DOD. Suitable for mobility scooters, electric wheel chairs, golf buggies etc.



## Specification

Cells Per Unit	3
Voltage Per Unit	6
Capacity	210Ah@10hr-rate to 1.80V per cell @25°C
Weight	Approx. 32.0 Kg(Tolerance±2%)
Max. Discharge Current	2100A (5 sec)
Internal Resistance	Approx. 2.2 mΩ
Operating Temperature Range	Discharge: -20°C~60°C Charge: 0°C~50°C Storage: -20°C~60°C
Normal Operating Temperature Range	25°C±5°C
Float charging Voltage	6.8 to 6.9 VDC/unit Average at 25°C
Recommended Maximum Charging Current Limit	63 A
Equalization and Cycle Service	7.3 to 7.4 VDC/unit Average at 25°C
Self Discharge	RITAR Valve Regulated Lead Acid (VRLA) batteries can be stored for more than 6 months at 25°C. Self-discharge ratio less than 3% per month at 25°C. Please charge batteries before using.
Terminal	Terminal F12
Container Material	A.B.S. UL94-HB, UL94-V0 Optional.



MH28539



G4M20206-0910-E-16



CERTIFICATE

Postcode: 421001  
is in conformity with

ISO 14001:2004 Standard



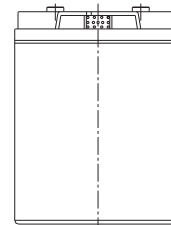
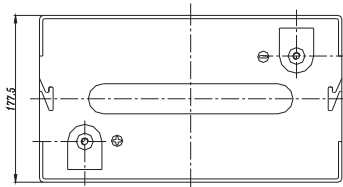
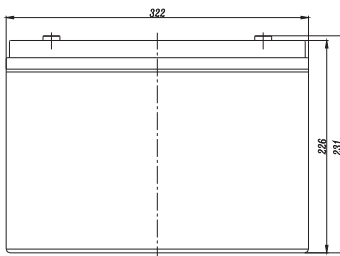
CERTIFICATE

Postcode: 421001  
is in conformity with

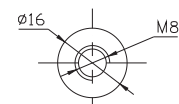
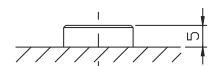
OHSAS 18001:1999 Standard

## Dimensions

Unit: mm Dimension: 322(L)×178(W)×231(H)



Terminal F12



## Constant Current Discharge Characteristics: A (25°C)

F.V/Time	5MIN	10MIN	15MIN	30MIN	1HR	2HR	3HR	4HR	5HR	8HR	10HR	20HR
4.80V	572.4	428.7	361.9	231.9	136.5	81.68	56.45	46.27	37.87	26.09	22.06	12.13
5.00V	555.8	408.0	354.5	228.0	135.9	81.06	56.24	46.05	37.65	25.87	21.84	11.91
5.10V	539.4	393.6	348.9	226.0	134.6	80.45	55.81	45.84	37.43	25.66	21.63	11.69
5.25V	484.3	363.2	332.2	220.4	133.4	79.84	55.59	45.41	36.98	25.45	21.42	11.47
5.40V	437.1	331.2	306.2	210.7	130.2	78.40	54.08	44.34	36.31	25.03	21.21	11.25
5.55V	373.3	296.0	274.7	197.4	123.7	74.92	51.70	42.20	34.75	23.96	20.57	10.59

## Constant Power Discharge Characteristics: W(25°C)

F.V/Time	5MIN	10MIN	15MIN	30MIN	1HR	2HR	3HR	4HR	5HR	8HR	10HR	20HR
4.80V	2960	2283	1991	1322	788.7	481.4	335.9	275.8	225.9	155.7	131.8	72.72
5.00V	2902	2213	1959	1305	786.8	478.8	336.0	275.4	225.3	155.0	131.0	71.46
5.10V	2869	2155	1937	1296	780.7	475.9	334.6	274.8	224.6	154.0	129.8	70.14
5.25V	2612	2006	1847	1266	773.7	472.5	333.3	272.2	221.9	152.7	128.5	68.82
5.40V	2379	1850	1707	1214	759.4	466.4	324.2	266.0	217.9	150.2	127.2	67.49
5.55V	2089	1672	1537	1140	726.9	449.1	310.2	253.2	208.5	143.8	123.4	63.52

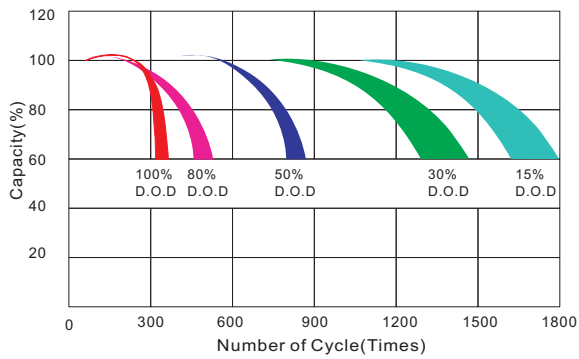
All mentioned values are average values(Tolerance±2%).

# EV6-210

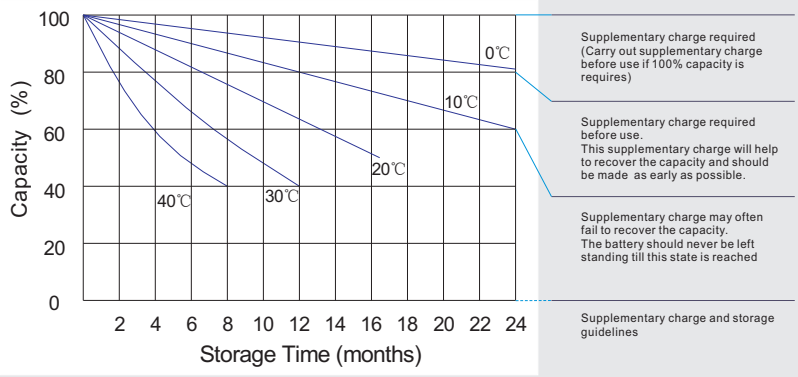
6V210Ah



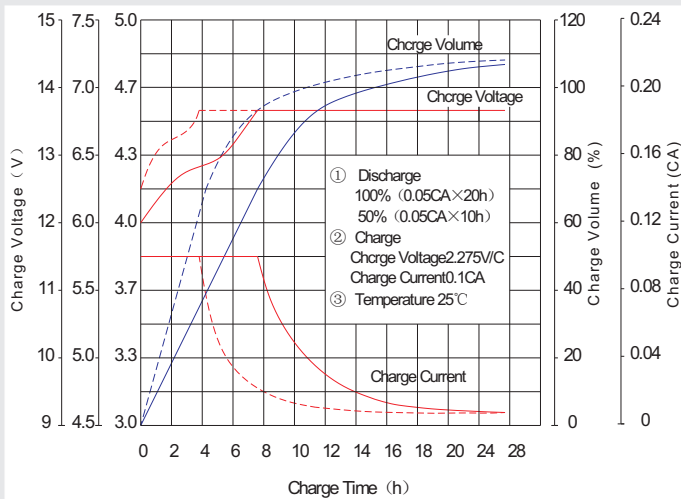
## Life characteristics of cyclic use



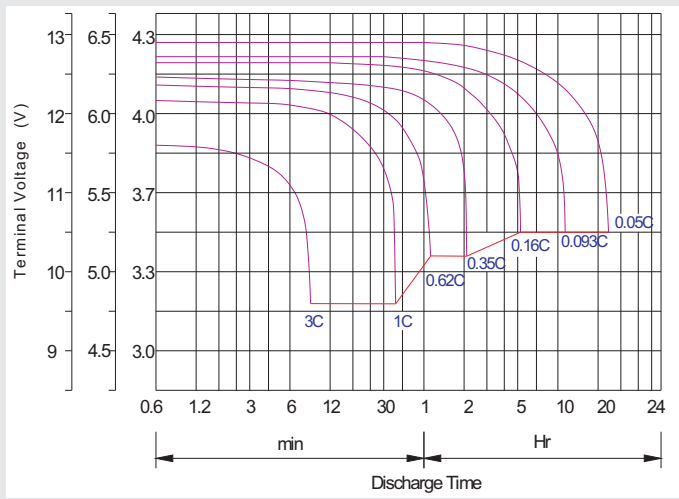
## Storage characteristic



## Charge characteristic Curve for standby use



## Discharge characteristic Curve



## Capacity Factors With Different Temperature

Battery Type		-20°C	-10°C	0°C	5°C	10°C	20°C	25°C	30°C	40°C	45°C
GEL Battery	6V&12V	50%	70%	83%	85%	90%	98%	100%	102%	104%	105%
	2V	60%	75%	85%	88%	92%	99%	100%	103%	105%	106%
AGM Battery	6V&12V	46%	66%	76%	83%	90%	98%	100%	103%	107%	109%
	2V	55%	70%	80%	85%	92%	99%	100%	104%	108%	110%

## Discharge Current VS. Discharge Voltage

Final Discharge Voltage V/cell	1.75V	1.70V	1.60V
Discharge Current (A)	(A) ≤ 0.2C	0.2C < (A) < 1.0C	(A) ≥ 1.0C

Charge the batteries at least once every six months, if they are stored at 25°C.

Charging Method:

Constant Voltage	-0.2Cx2h+2.4-2.45V/cellx24h, Max. Current 0.3C
Constant Current	-0.2Cx2h+0.1Cx12h
Fast	-0.2Cx2h+0.3Cx4h

Bolt	M5	M6	M8
Terminal	F3 F4 F13 F18 T25 T26	F8 F11 F12-1 F15	F5 F9 F10 F12 F14 F16
Torque	6~7N·m	8~10N·m	10~12N·m

## Maintenance & Cautions

<b>Cycle service</b>
※ Avoid battery over discharge, especially battery series connection use.
※ Charged with recommend voltage, ensure battery can be full recharged.
In general, recharge capacity should be 1.1-1.15 times discharge capacity.
※ Effect of temperature on cycle charge voltage: -4mV/°C/Cell.
※ There are a number of factors that will affect the length of cyclic service.
The most significant are depth of discharge, ambient temperature, discharge rate, and the manner in which the battery is recharged.
Generally specking, the most important factors is depth of discharge.